



Specification For Round And Oval Tri-proof Lights

PRODUCT NAME: Round And Oval Tri-proof Lights

Item NO.:

SR05-15W-OV210
SR05-24W-OV270
SR05-15W-160
SR05-24W-220

Made By	Checked by
Hu	Jason Song



Blis ledlighting B.V.

The contact: Jason Song E-MAIL: admin@tsongledlighting.com

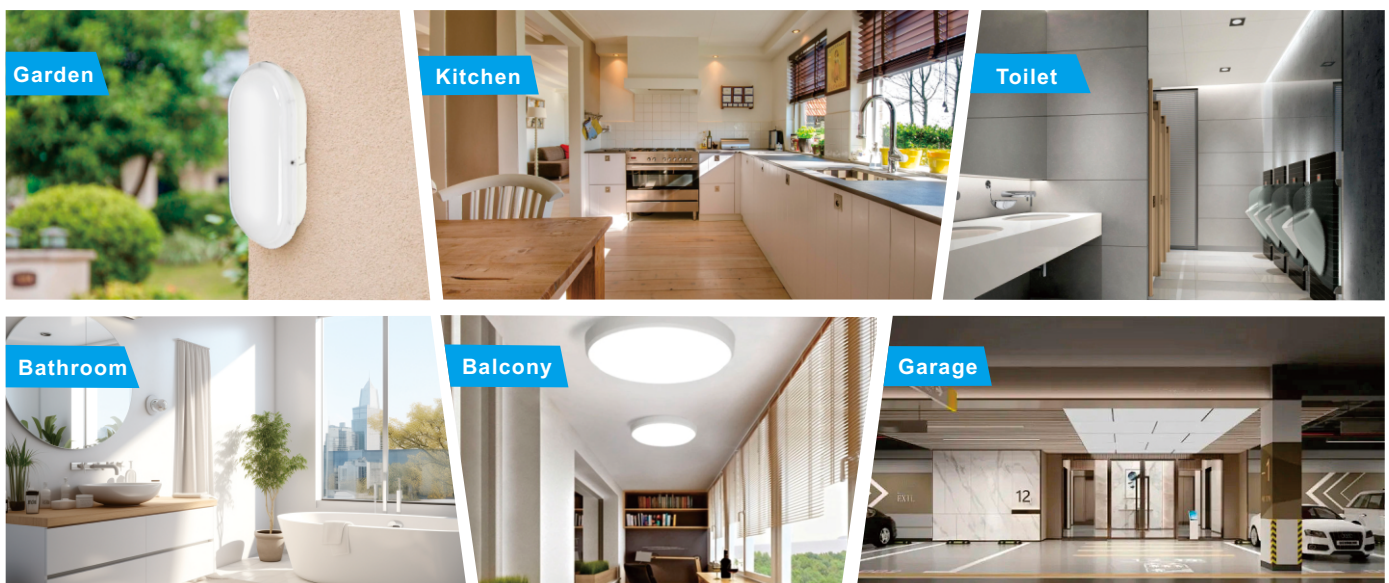
WEB: www.tsongledlighting.com

ADD: Steenoven 21, 3911 TX Rhenen, Netherlands

Product Feature:

- ★ This led three-proof light features an ip66 waterproof rating, ensuring reliable performance in damp environments such as bathrooms, gardens, and patios, providing long-lasting illumination.
- ★ This led three-proof light is made of durable materials, capable of withstanding various harsh weather conditions, and has moisture-proof, dust-proof, and corrosion-resistant capabilities, making it very suitable for indoor and outdoor applications.
- ★ This multifunctional led three-proof light is available in two shapes - round and oval - offering a stylish and modern aesthetic that seamlessly blends with various architectural styles and enhances the decorative effect of your home.
- ★ This led three-proof light uses energy-saving leds, providing bright and consistent illumination while consuming only 15w or 24w, helping you save energy costs and reduce your carbon footprint.
- ★ The wide ac200-240v voltage range ensures compatibility with most electrical systems, simplifies installation, and provides obstacle-free operation for homeowners and professional installers.

Applications:



Photo



24W



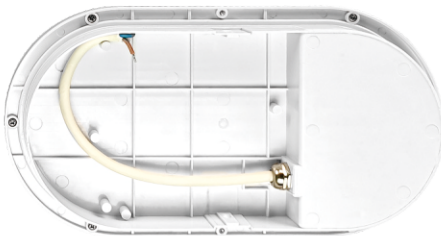
24W



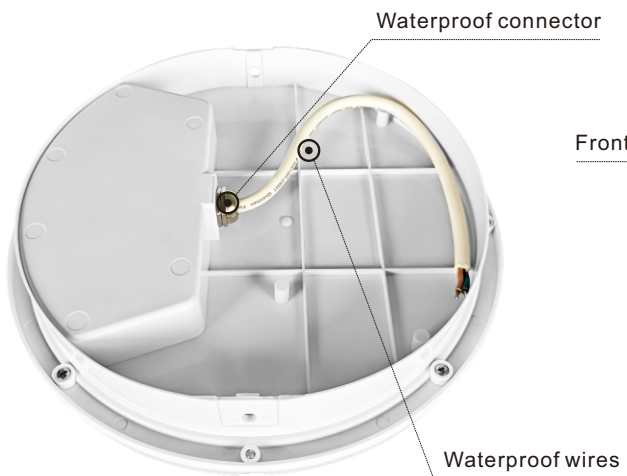
15W



15W



High-brightness LED chip



Front of the lampshade

ABS

IP66 waterproof

Photo

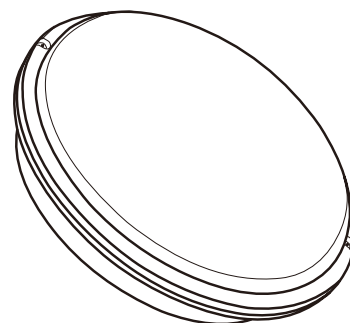
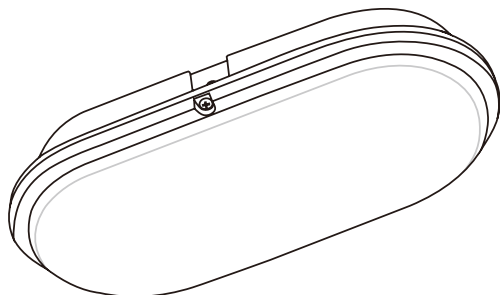


Even in extreme humidity and harsh environments, the lamp maintains stable performance after a two-hour water immersion test, demonstrating outstanding reliability.

Dimensions(Unit:mm)



Item No.	Power	Product Size(L*W*H)
SR05-15W-OV210	15W	L212*W113*H65mm
SR05-24W-OV270	24W	L272*W145*H65mm
SR05-15W-160	15W	Φ165.5*58mm
SR05-24W-220	24W	Φ220*60mm



Electrical/Optical Characteristics/Specifications



Item No.:SR05-15W-OV210

Input Voltage	Max.Current	Operating Voltage	Constant Current	Power Consumption	Power Factor		
AC200-240V	0.075A	DC 270V	0.055A	15W	≥0.5		
LED Type	LED Q'ty	CRI	CCT	3000K	4000K	5000K	6000K
			Luminous efficiency	100LM/W	110LM/W	110LM/W	110LM/W
SMD2835	60PCS	≥80Ra	Luminous flux	1500LM±10%	1650LM±10%	1650LM±10%	1650LM±10%
			Beam Angle	120°			
Life Time	Certifications	IP Code	Luminaires Class	product dimension	N.W		
50.000Hours	CE,RoHS	IP66	Class II	L212*W113*H65mm	0.25Kg		
Operating Temperature	Storage Temperature	Humidity Operating	Humidity Storage	Packing dimension	G.W		
-20°Cto+50°C	-30°Cto+60°C	10-80%RH	10-90%RH	L120*W72*H220mm	0.3Kg		
Outer carton package	50*1layer=50PCS/carton,K=K corrugated paper, L620*W380*H460mm,GW:15.8KG						

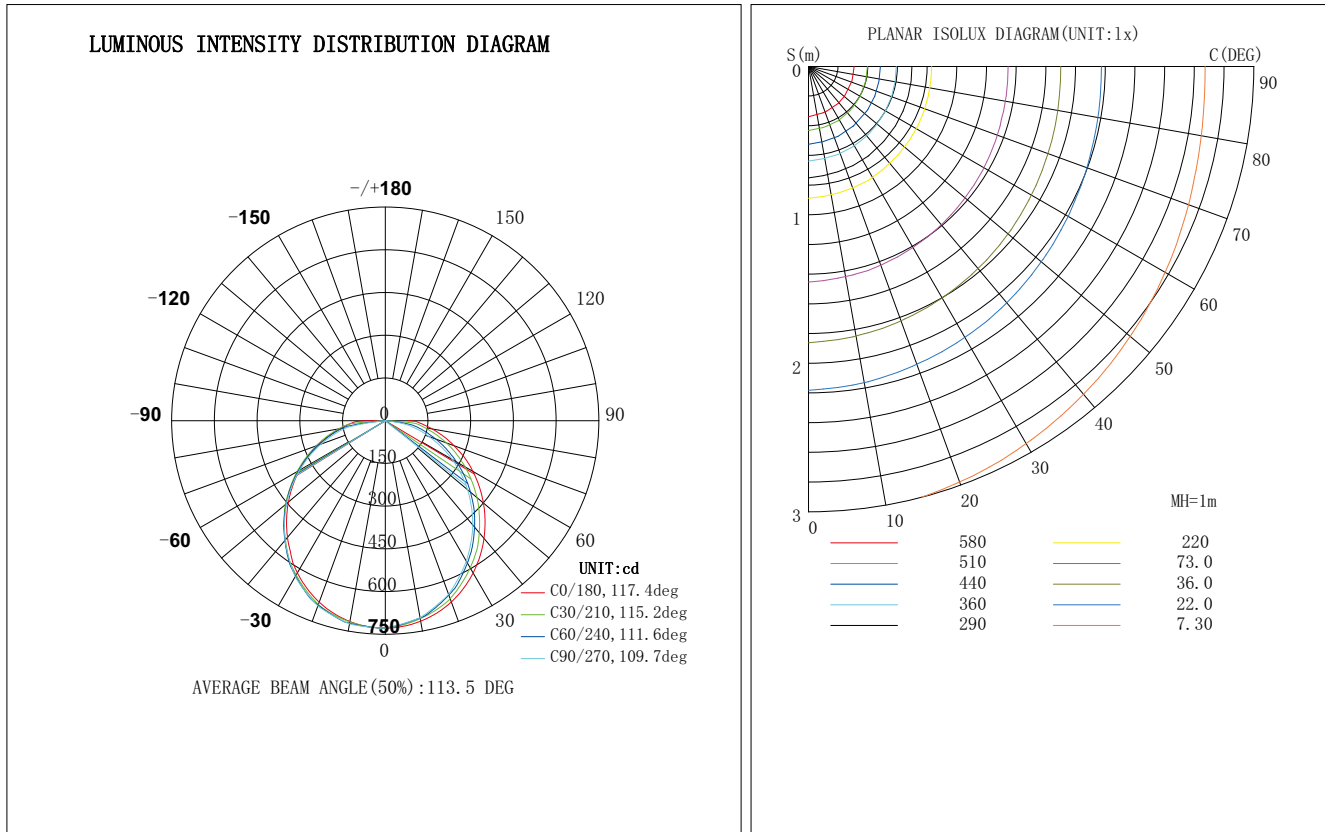


Item No.:SR05-24W-OV270

Input Voltage	Max.Current	Operating Voltage	Constant Current	Power Consumption	Power Factor		
AC200-240V	0.115A	DC270V	0.088A	24W	≥0.5		
LED Type	LED Q'ty	CRI	CCT	3000K	4000K	5000K	6000K
			Luminous efficiency	100LM/W	110LM/W	110LM/W	110LM/W
SMD2835	90PCS	≥80Ra	Luminous flux	2400LM±10%	2640LM±10%	2640LM±10%	2640LM±10%
			Beam Angle	120°			
Life Time	Certifications	IP Code	Luminaires Class	product dimension	N.W		
50.000Hours	CE,RoHS	IP66	Class II	L272*W145*H65mm	0.36Kg		
Operating Temperature	Storage Temperature	Humidity Operating	Humidity Storage	Packing dimension	G.W		
-20°Cto+50°C	-30°Cto+60°C	10-80%RH	10-90%RH	L152*W73*H280mm	0.43Kg		
Outer carton package	40*1layer=40PCS/carton,K=K corrugated paper, L630*W385*H580mm,GW:18KG						

Test report

Item No.: **SR05-24W-OV270**



Electrical/Optical Characteristics/Specifications

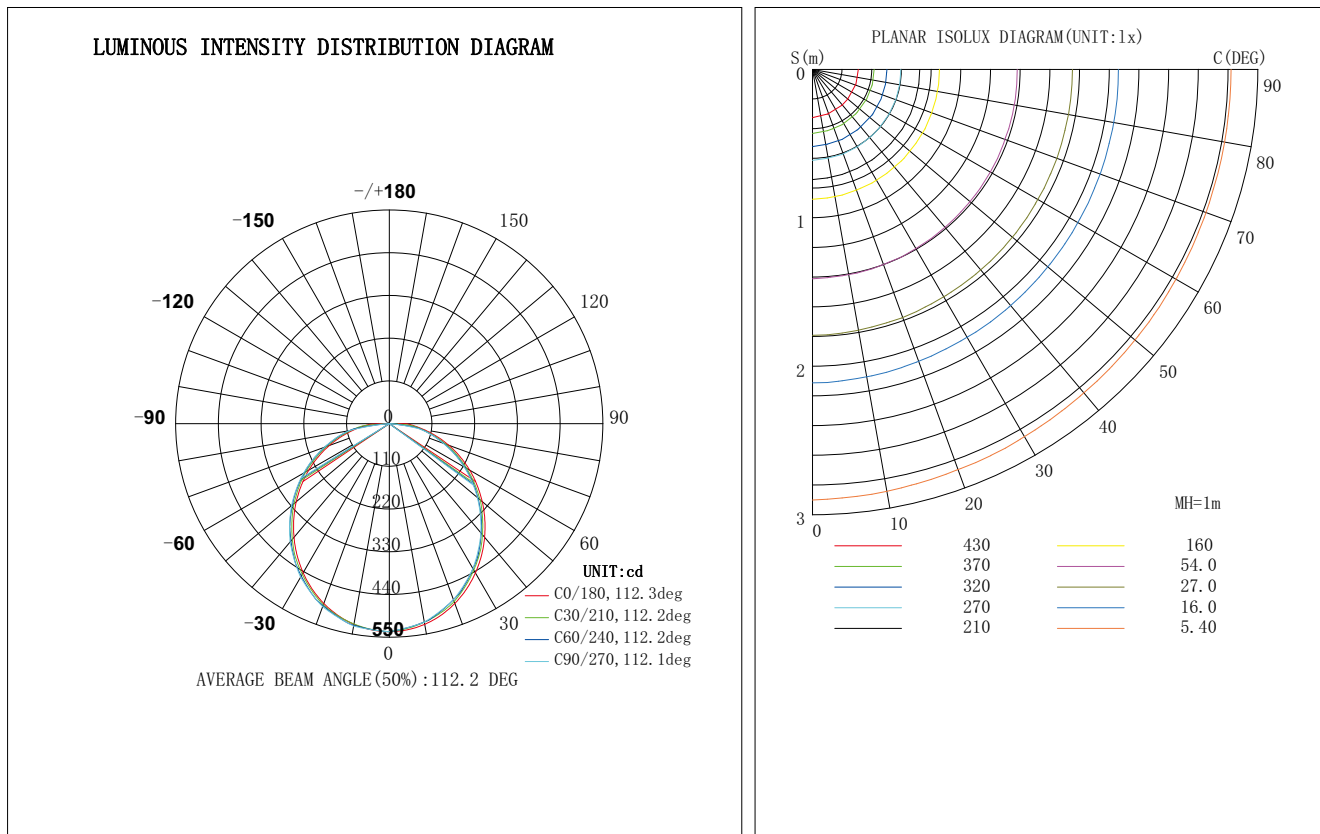


Item No.: **SR05-15W-160**

Input Voltage	Max.Current	Operating Voltage	Constant Current	Power Consumption				Power Factor
AC200-240V	0.075A	DC270V	0.055A	15W				≥0.5
LED Type	LED Q'ty	CRI	CCT	3000K	4000K	5000K	6000K	
			Luminous efficiency	100LM/W	110LM/W	110LM/W	110LM/W	
SMD2835	60PCS	≥80Ra	Luminous flux	1500LM±10%	1650LM±10%	1650LM±10%	1650LM±10%	
			Beam Angle	120°				
Life Time	Certifications	IP Code	Luminaires Class	product dimension		N.W		
50.000Hours	CE,RoHS	IP66	Class II	Φ165.5*58mm		0.23KG		
Operating Temperature	Storage Temperature	Humidity Operating	Humidity Storage	Packing dimension		G.W		
-20°Cto+50°C	-30°Cto+60°C	10-80%RH	10-90%RH	L170*W65*H170mm		0.28KG		
Outer carton package	50*1layer=50PCS/carton,K=K corrugated paper, L870*W345*H360mm,GW:14.8KG							

Test Report

Item No.:SR05-15W-160



Electrical/Optical Characteristics/Specifications



Item No.:SR05-24W-220

Input Voltage	Max.Current	Operating Voltage	Constant Current	Power Consumption				Power Factor
AC200-240V	0.115A	DC270V	0.088A	24W				≥0.5
LED Type	LED Q'ty	CRI	CCT	3000K	4000K	5000K	6000K	
			Luminous efficiency	100LM/W	110LM/W	110LM/W	110LM/W	
SMD2835	90PCS	≥80Ra	Luminous flux	2400LM±10%	2640LM±10%	2640LM±10%	2640LM±10%	
			Beam Angle	120°				
Life Time	Certifications	IP Code	Luminaires Class	product dimension		N.W		
50.000Hours	CE,RoHS	IP66	Class II	Φ220*60mm		0.38KG		
Operating Temperature	Storage Temperature	Humidity Operating	Humidity Storage	Packing dimension		G.W		
-20°Cto+50°C	-30°Cto+60°C	10-80%RH	10-90%RH	L228*W68*H228mm		0.45KG		
Outer carton package	40*1layer=40PCS/carton,K=K corrugated paper, L705*W475*H475mm,GW:18.8KG							

Packing Info



PE bag

and



Accessories package



Inner box (1 PCS)



Outer Carton

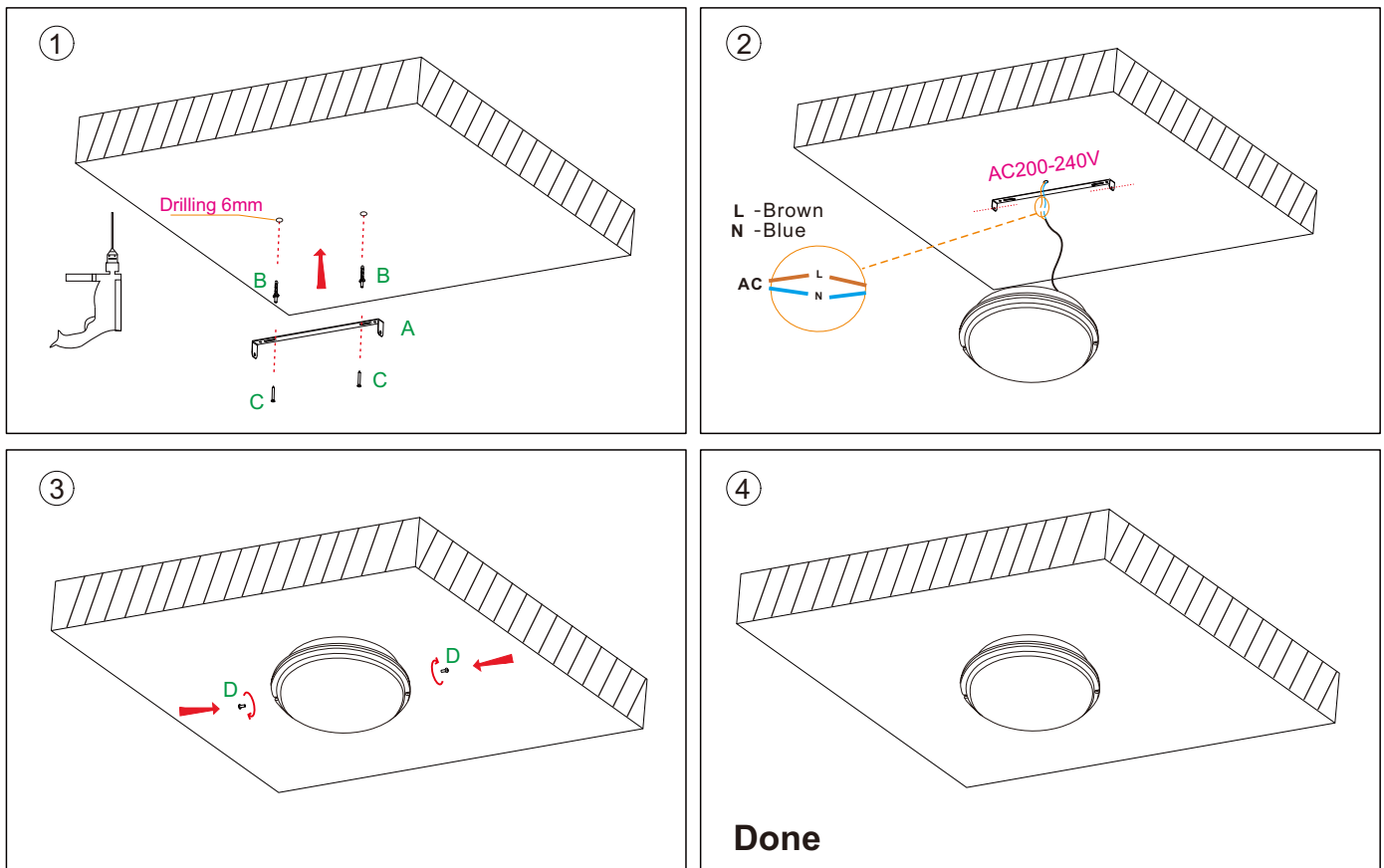
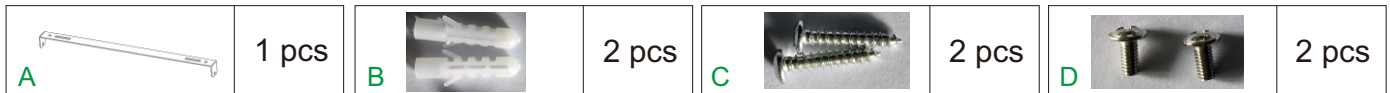
Item No.	Power	Packing QTY
SR05-15W-OV210	15W	50 pcs/carton
SR05-24W-OV270	24W	40 pcs/carton
SR05-15W-160	15W	50 pcs/carton
SR05-24W-220	24W	40 pcs/carton

Notes:

1. This product must be installed by a professional.
2. If there is any damage to the wire or housing, it should be treated as a defective product and should not be used.
3. High voltage, non-professionals are not allowed to install, disassemble the product or connect the wires.

Installation Instruction

Attachment



Notes:

1. Please always use the light out of its package.
2. Before starting use of the light, please check if the light was damaged during transportation. If any damage shown, please DO not install or use it.
3. Any maintenance should be performed by trained professionals only.
4. Keep packaging material away from the reach of children and pets. Risk of suffocation!
5. Caution. The packaging contains small parts that may be swallowed by children.
6. Never leave children unattended in the vicinity of the lights and do not allow them to play with electrical devices.
7. Try to avoid looking directly in the LED beam-especially for extended periods of time. Do not shine the LED light in another person's eyes.
8. Never cover the lights by other objects.
9. Never allow the light to come into contact with open flames or external heat sources.
10. The products need to re-repair inspection or special treatment of retirement after service time
11. Non-professionals are not allowed to disassemble and maintain the products. We have the right not to provide after-slae service if unauthorized disassembly and maintenance happens to the products.